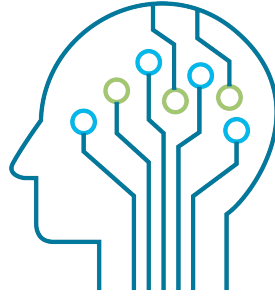


EXPLORE

A stylized bar chart with a red line graph overlaid on a dark blue background with vertical grid lines. The bars are light blue and the line is red. The chart shows a general upward trend with some fluctuations. The background has a dark blue gradient with vertical lines and a faint grid pattern.

EXPLORE Data Science Academy Course Outline



EXPLORE Data Science Academy Course Outline

At EXPLORE we pride ourselves on a premium learning experience, whatever avenue you choose to pursue with us. We have a variety of offerings to suit your pocket and your circumstances.

Our flagship Data Science course is best experienced on campus, where the immersive experience provides the best preparation for the working world. Our graduates are sought-after and praised for how quickly and effectively they step into new arenas of work. These courses come with our innovative Money-Back Promise.

If however on-campus study is not an option for you, our online courses provide an excellent framework to amplify your current skills, and equip you with brand new ones to apply in your field of expertise.

Course	Total Cost	Monthly instalment	Duration	Hours /day	Venue	Next Start Date
Data Science*	R60 000	R10 000	6 Months	8 Hours	Jhb	6 July 2020
Data Science*	R60 000	R10 000	6 Months	8 Hours	Cape Town	6 July 2020
Data Science - Online Part Time	R30 000* (if paid upfront)	R3 000	12 Months	2-3 Hours	On-line	6 July 2020

* EXPLORE's Money-back Promise applies to full-time on-campus Data Science courses
T's and C's available on www.explore-datascience.net.

Frequently Asked Questions

Q: How to apply?

A: All applications happen via our website: www.explore-datascience.net. Select the course and location (on campus or online) which works for you and click Apply Now. For on campus study, there are various requirements, for online applications it is simpler.

Q: Do I qualify to apply?

A: For on campus study there are some qualifying criteria, which can be found in the T's and C's of our Money-Back Promise (on the website). For online study, anyone qualifies!

Q: What is the best course for me?

A: This depends on what your constraints are - can you study full time on campus, or do you need the flexibility of online study. On-campus is the premium experience, backed up with a Money-Back Promise! Still not sure... Use our handy tool to find the course for you. Look for the link under 'Find your course'

Q: What qualification will I have at the end?

A: We are SETA Accredited and our Data Science course is at NQF level 5. Upon completion of our courses, you will receive a completion certificate.

Q: Is it industry recognised?

A: EXPLORE Data Science Academy graduates are Amazing People, doing Amazing Things. Our Alumni are highly sought after and >90% of them have found industry related employment within 6 months of graduating.

Q: I've registered but didn't get confirmation?

A: First step is to check your Spam or Junk mail folders. Sometimes the internet gremlins hide our emails there. Alternatively, log into your student dashboard and check that you completed all the steps for application. Look for the sign-in button on the top right of the website page.

Q: What support is available for online students?

A: Webinars will be scheduled for content briefing, and, we use the Slack chat platform which gives you access to the student community and course facilitators. The course is intensive and relies on self-learning and discipline to learn all the skills included

Q: Are there career services for online students?

A: Our career services team is willing to help and support all students. There is a host of useful material in our online learning platform which is available to all EXPLORE students. One-on-one career services sessions can be arranged if motivated for.

For more information:

Email us: admissions@explore-ai.net

Visit: explore-datascience.net

Check out our FAQs on explore-datascience.net

Frequently Asked Questions

Q: Am I eligible for sponsorship?

A: Corporate sponsorship is available to South African Nationals between the ages of 18 and 35 for our full time on-campus Courses (1yr long). Competition for these places is extremely high.

Q: How does the application process work?

A: At EXPLORE we value aptitude and attitude, and we assess these traits through a stepwise application process for on-campus study:

Step 1: Application and online aptitude test - assesses thinking skills, logic and reasoning

Step 2: Online Bootcamp - a combination of learning and testing

Step 3: Interview

Step 4: Successful applicants join our ranks as an EXPLORER

Once you've registered for a course, you can track your progress on the student dashboard on our website - see what steps lie ahead, when they kick off and when they close.

Q: Can I work part time while studying on campus?

A: We do not recommend that you have any other commitments while studying Full Time on campus. Our on campus courses require a full time commitment of 40 hours per week. Students who have attempted to juggle commitments have found that it is not viable or sustainable.

Q: Is there a part time study option?

A: Our online courses are ideal for part time study. They require discipline and focus to complete.

Q: What if I realise that Data Science isn't for me?

A: We offer a pay as you go structure to our self funded students. If at any time you wish to discontinue the course, just send us 1 months notice.

Q: If I am unsuccessful, can I apply again?

A: Spots are limited and highly coveted, and we are not able to offer a place to everyone. We run several intakes throughout the year. If your interest in Data Science remains, please apply again.

For more information:

Email us: admissions@explore-ai.net

Visit: www.explore-datascience.net

Check out our FAQs on explore-datascience.net
